

| M-1019-GB |

# MOUNTING INSTRUCTION



## VOLUME DISPENSER TYPE VD5

Mounting on  $\varnothing 38$ ,  $\varnothing 50$ ,  $\varnothing 60$  and  $\varnothing 75$

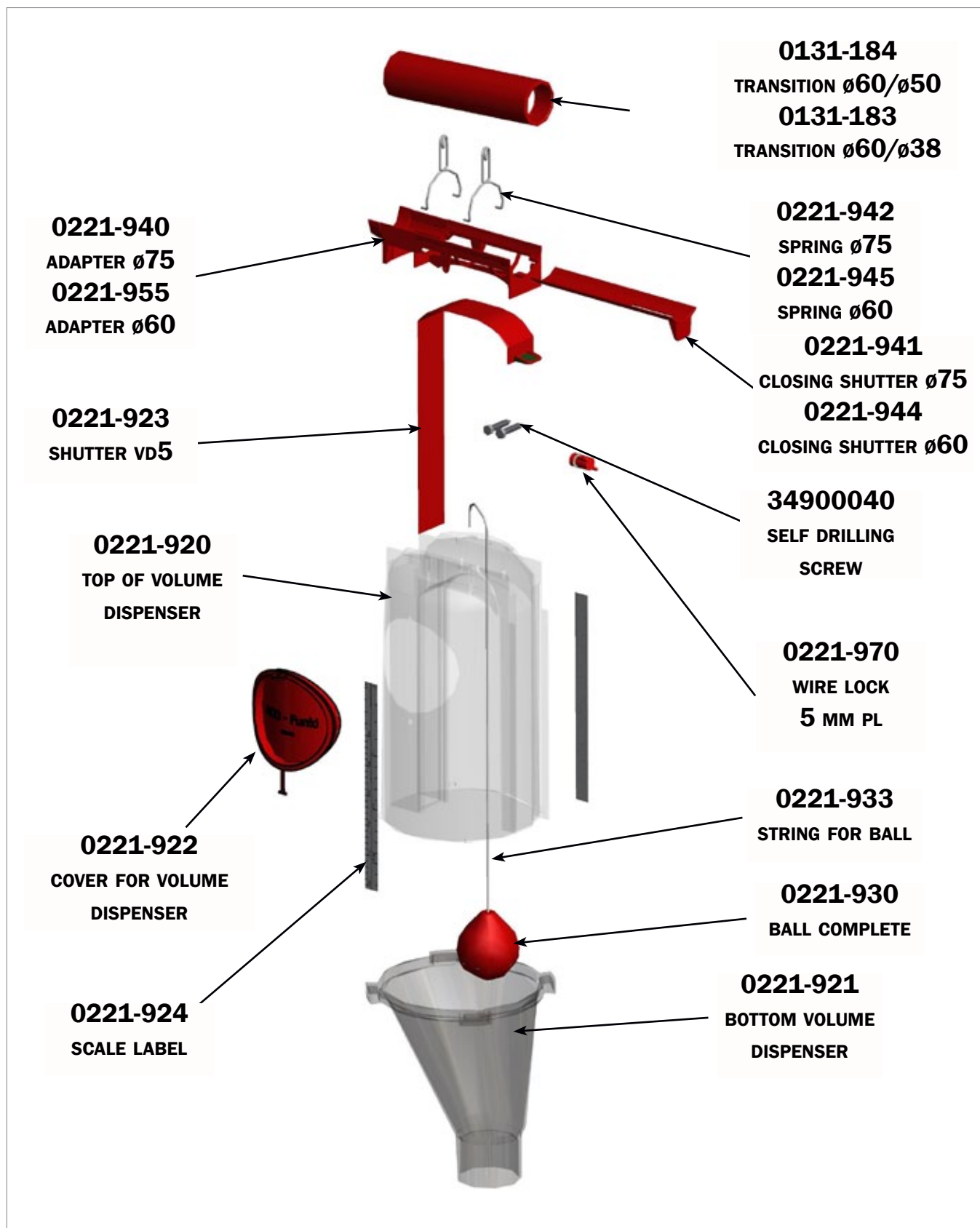


**ACO FUNKI A/S**  
Kirkevænget 5  
DK-7400 Herning

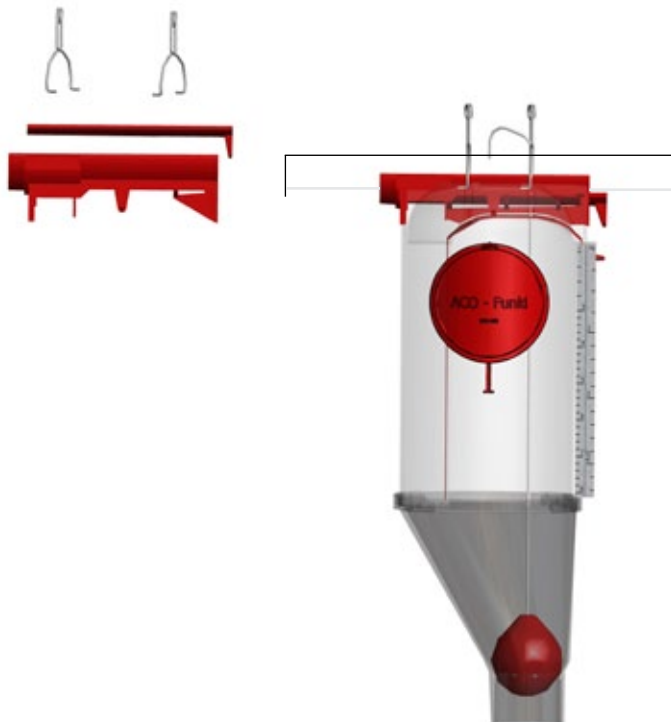
Tel. +45 9711 9600  
[www.acofunki.com](http://www.acofunki.com)  
[www.egebjerg.com](http://www.egebjerg.com)

**DANISH DESIGN | GERMAN QUALITY | GLOBAL EXPERIENCE**

VD5



## Mounting on Ø60/Ø75

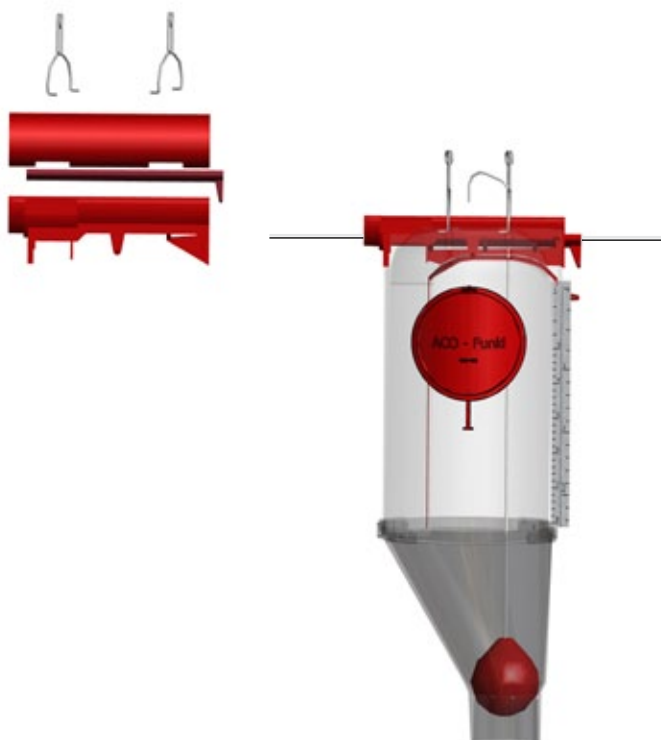


First make the placement of the dispenser on the tubes. Then drill holes on the tubes according to the instructions in the installation sheet M-1007.

Volume dispenser mounted on the transport pipe Ø60 and Ø75MM plants.

Please note that expired holes on the transport tube fits with the inlet of the volume of doses.

## Mounting on Ø38/Ø50



Volume dispenser mounted on the transport tube with transition kit Ø38 and Ø50mm system. Please note that outlet holes on the transport tube fits with the inlet of the volume dispensers.

No. 0131-193 and 0131-184  
Transition kit for Ø38 and Ø50mm  
plant (consisting of two identical  
halves).

Volume dispenser installed in the following way:

Adapter is clicked on the VD5.

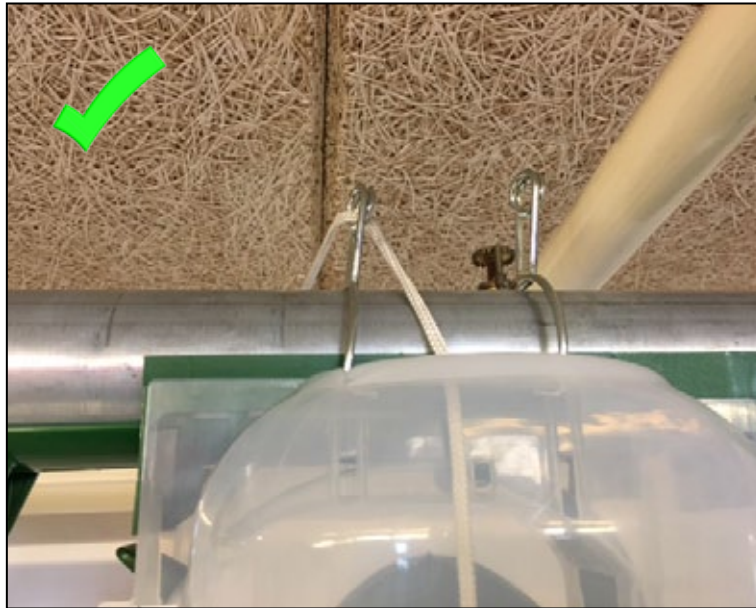
The closing shutter is placed in the adapter.

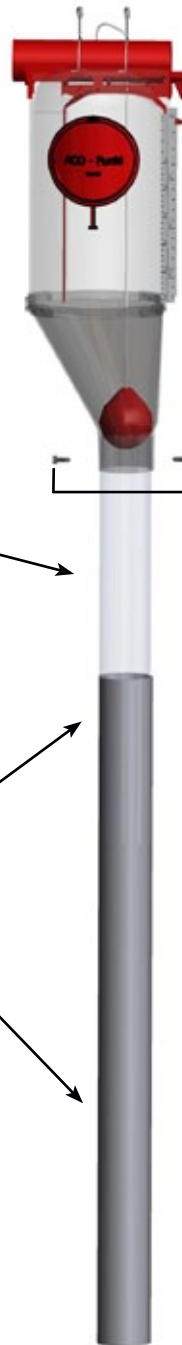
Transition kit is mounted on the transport tube.

The springs is placed in the hole furthest away from you. Draw spring toward you until it is installed correctly.

Springs are mounted without tools.

## CORRECT MOUNTING OF STRING





The clear PVC pipe is mounted min. 100mm below the top of the galvanized pipe. 20000032

here mounted 2 x self drilling screws, one from each side.

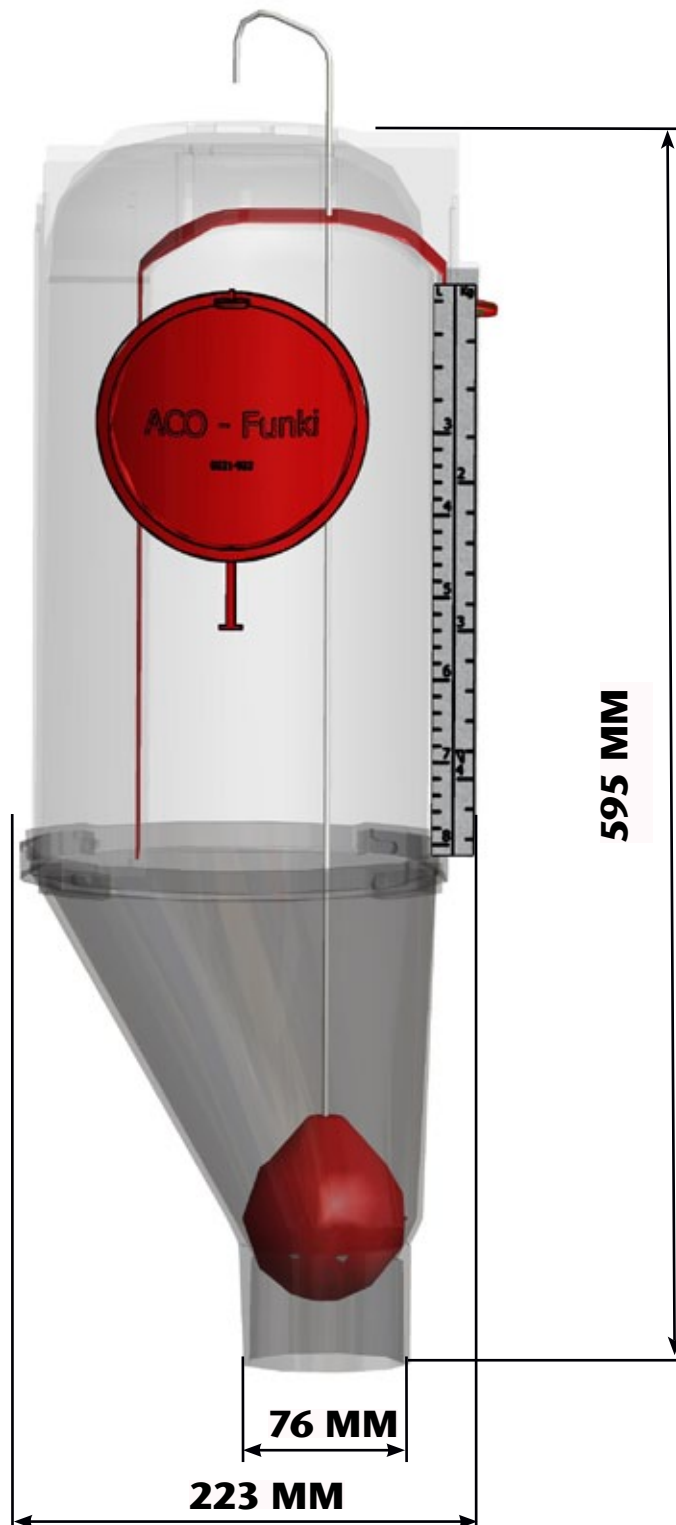
34900040

Galvanized pipe is available in several lengths. mounted min. 2 places. (With 120mm down pipe only one place)

There are several ways to mount down pipe. See the range in the price book

## DIMENSIONS

Capacity 10 liters





A tension spring should be fitted for each row in order to keep the release system stretch.

No. 0221-366 Screw eye set

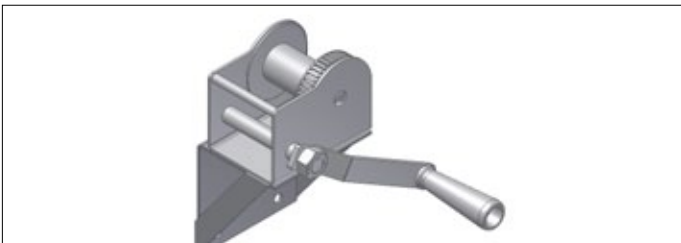


Joints between wire and galvanised spring wire should be secured using two wire locks.

No. 0221-970 Wire lock.

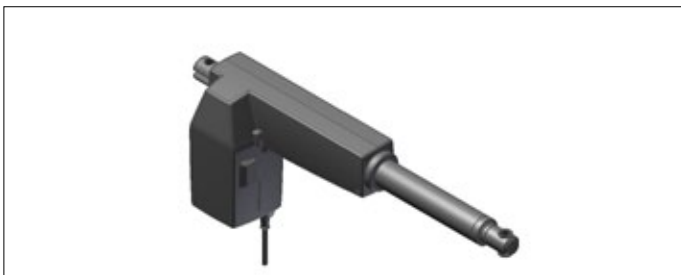
No. 09000017 Steel wire Ø3

No. 02900000 Galvanised spring wire.



The hand winch should be mounted on a wall and is used to open/close the volume dispensers.

No. 0152-017 Hand winch



Linak actuator for automatic release of Volume dispenser is mounted on feed pipes or wall.

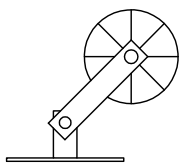
See price book for further products.

## Tensioning and adjusting the release system

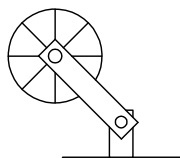
1. To reduce strain in the release system, it is recommended that the distance between hand winch and tension springs is as short as possible. This can be ensured by installing a communal main wire and attaching subsidiary wires for individual rows (see layout examples).
2. As the wire stretches when subjected to load, wire should only be used around of pulleys and hand winches. For straight stretches, galvanised spring wire should be used.
3. A tension spring should be installed for each row in order to keep the release system taut.
4. On each row the balls on the volume dispensers should be fitted unequal to prevent simultaneous opening.

# RELEASE SYSTEM

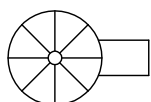
## Key to symbols



No. 0156-008 Pulley and bracket type G+T

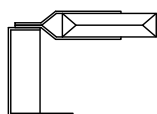


No. 0156-008 Pulley and bracket type G+T

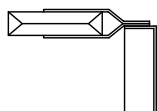


No. 0221-363 Pulley with bracket set  $\varnothing$ 38 mm

No. 0221-364 Pulley with bracket set  $\varnothing$ 60 mm



No. 0156-006 Pulley and bracket type G+R



No. 0156-005 Pulley and bracket type G+L



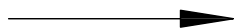
No. 0152-017 Hand winch complete 500 kg



Nr. 0153-467 LA36 length of stroke 250mm



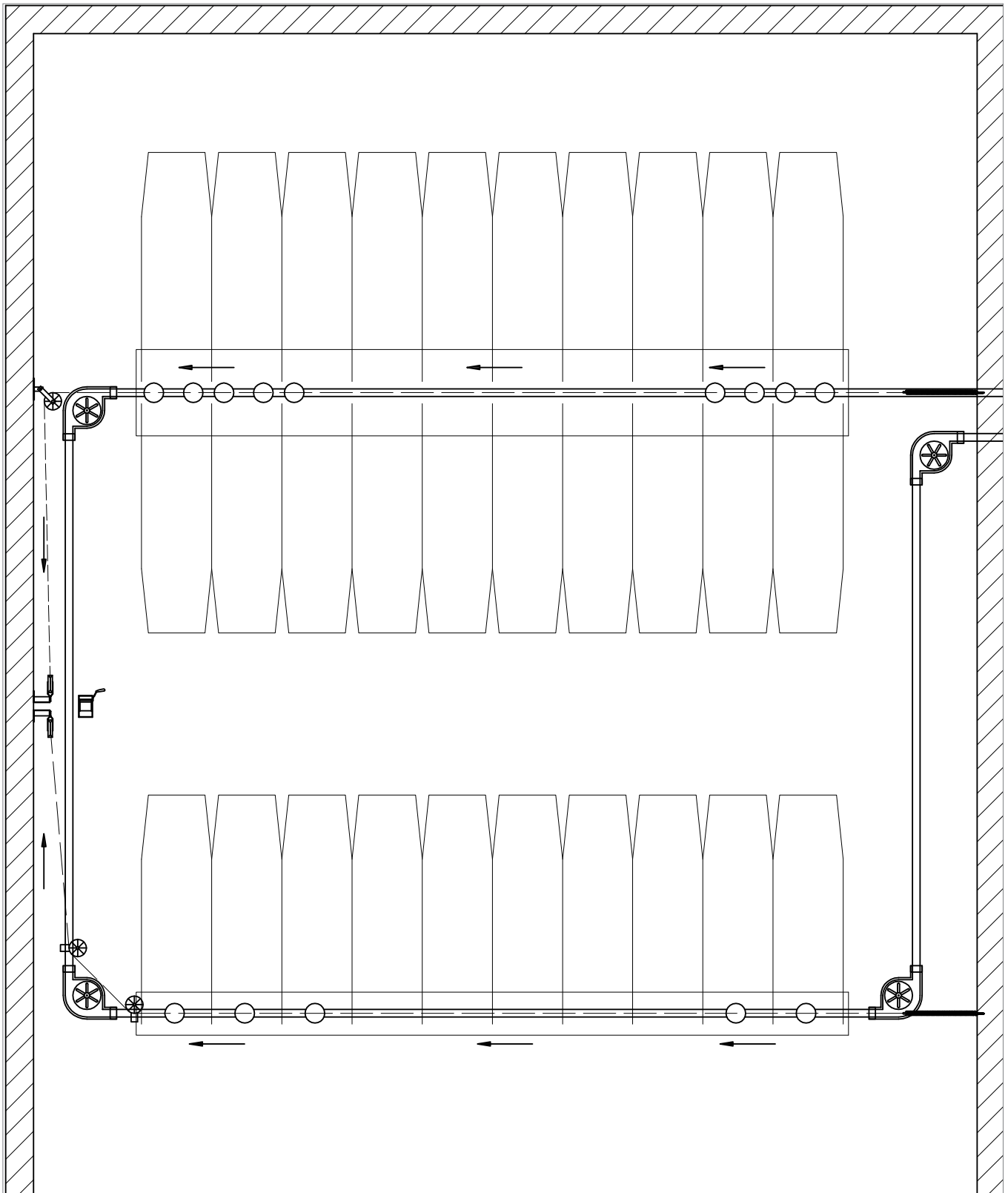
No. 0221-366 Screw eye set



Direction in which the release system wire is pulled to open the volume dispensers..

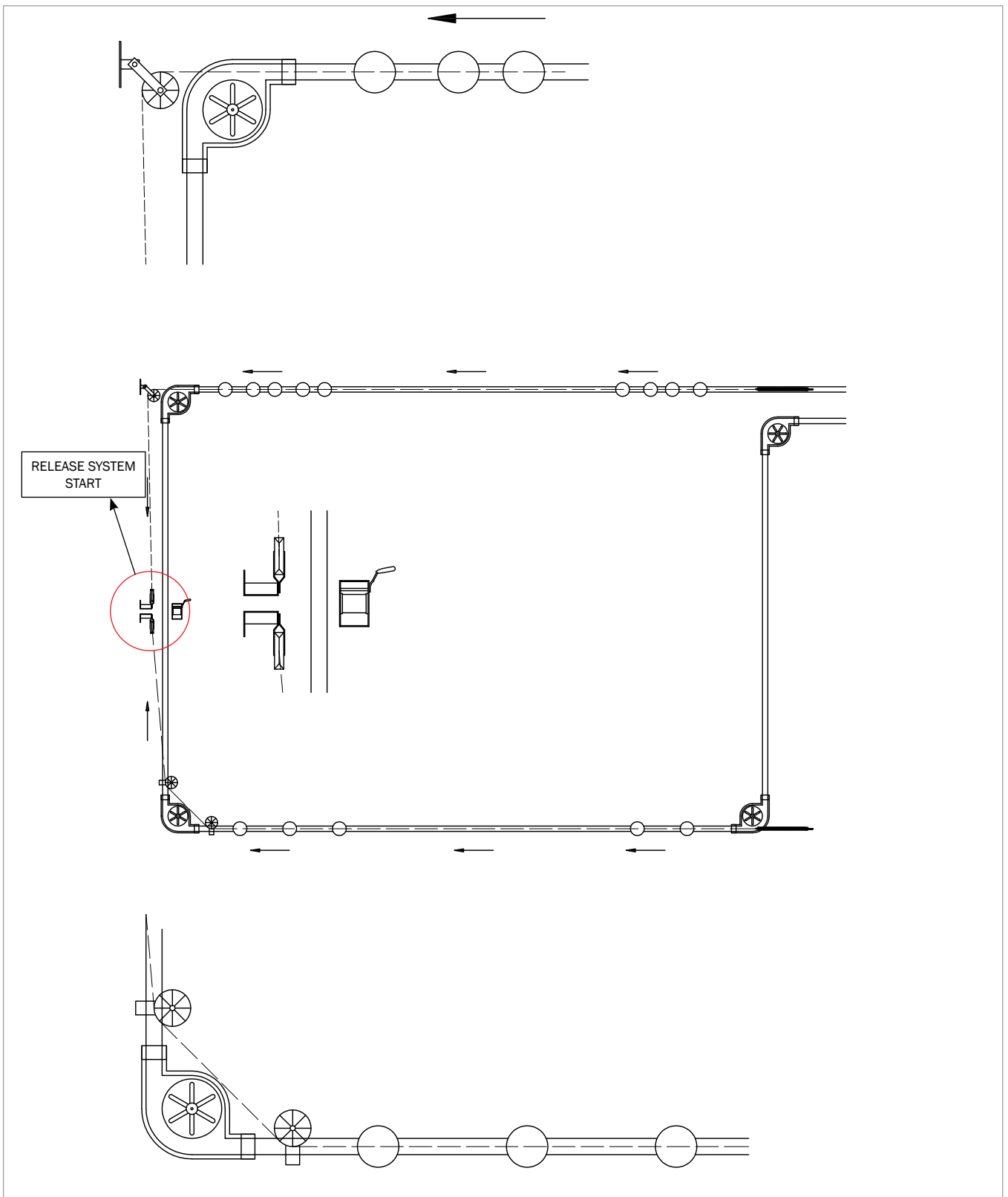


Example 1

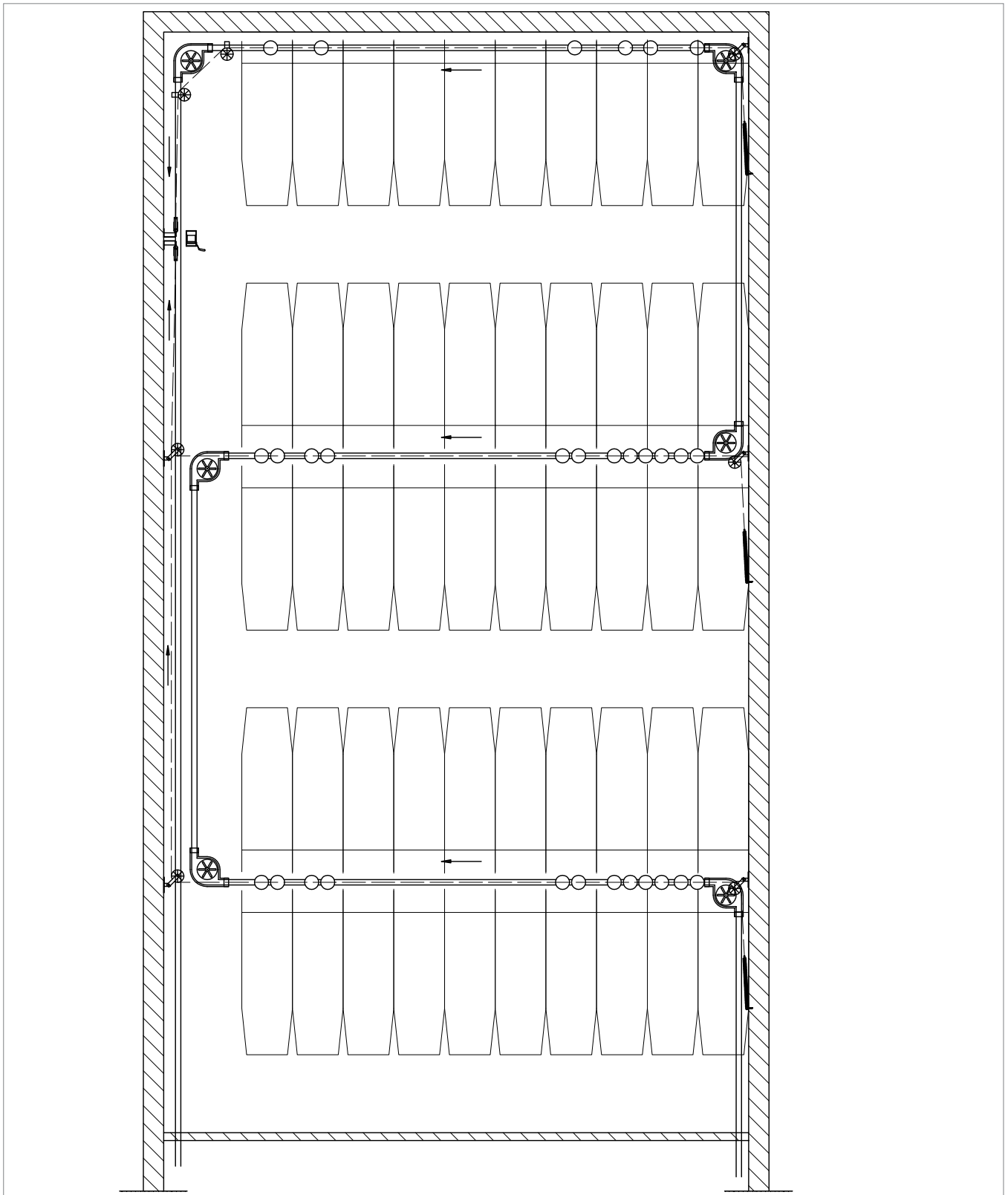


# RELEASE SYSTEM DETAILS

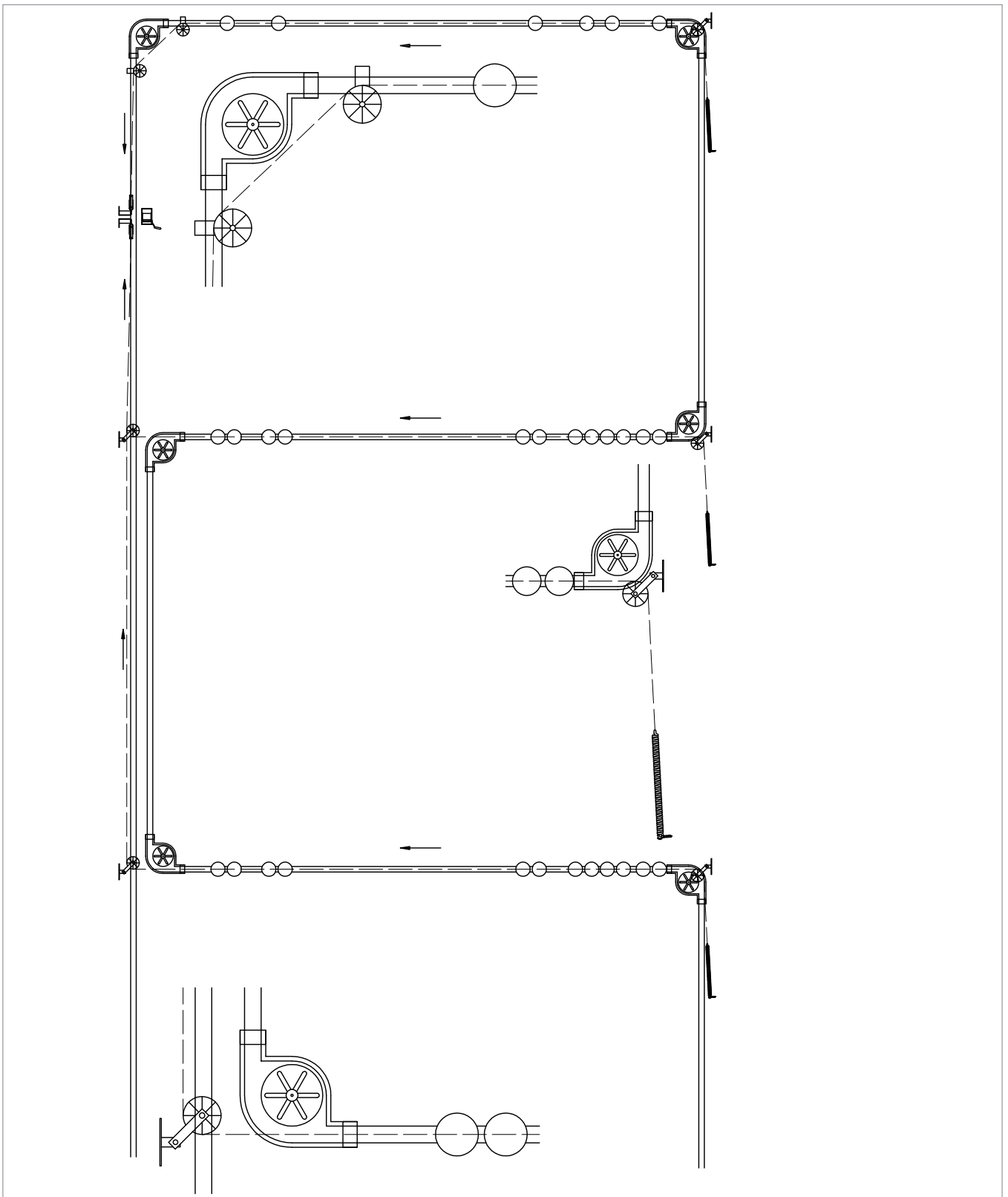
## Example 1



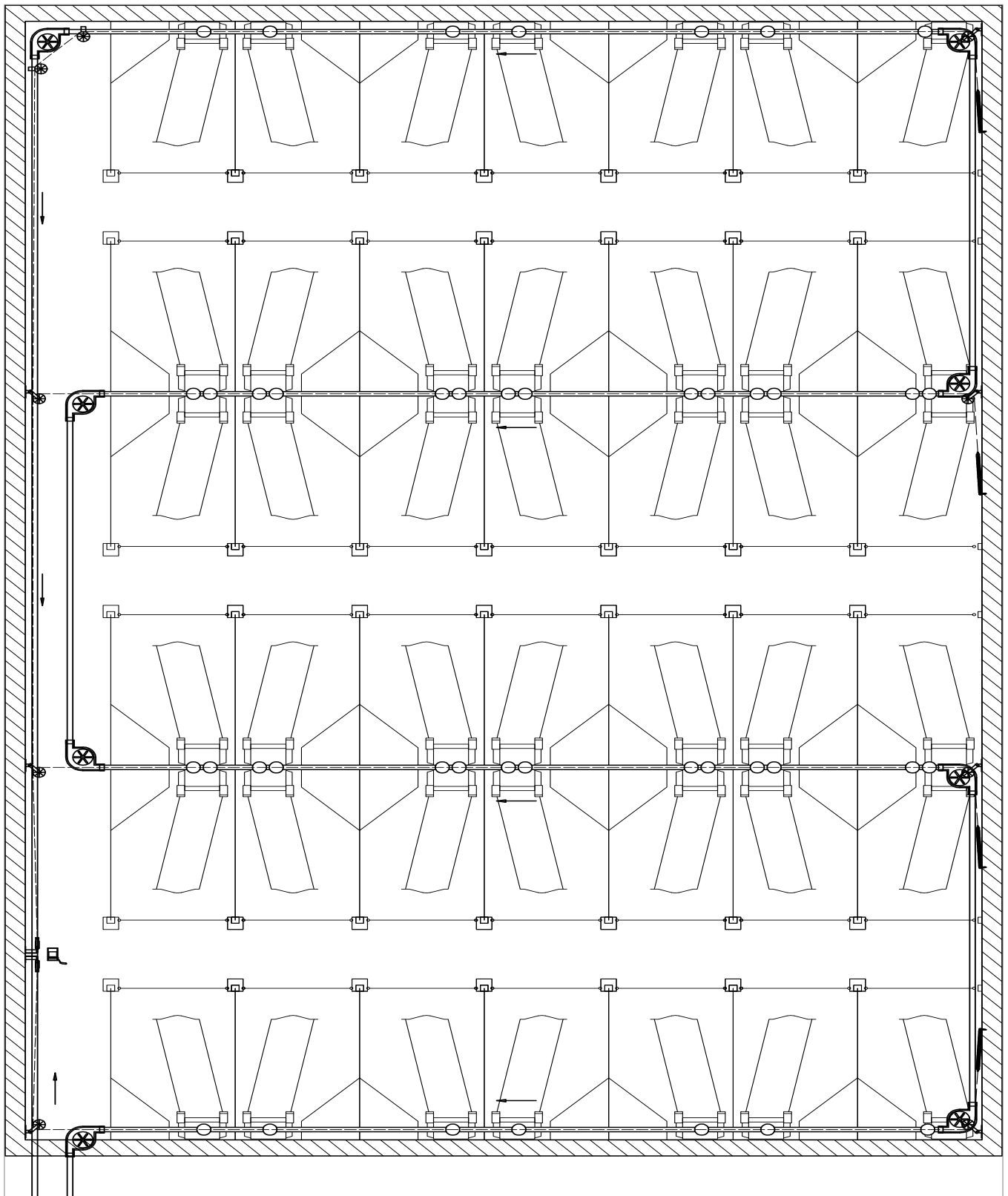
Example 2



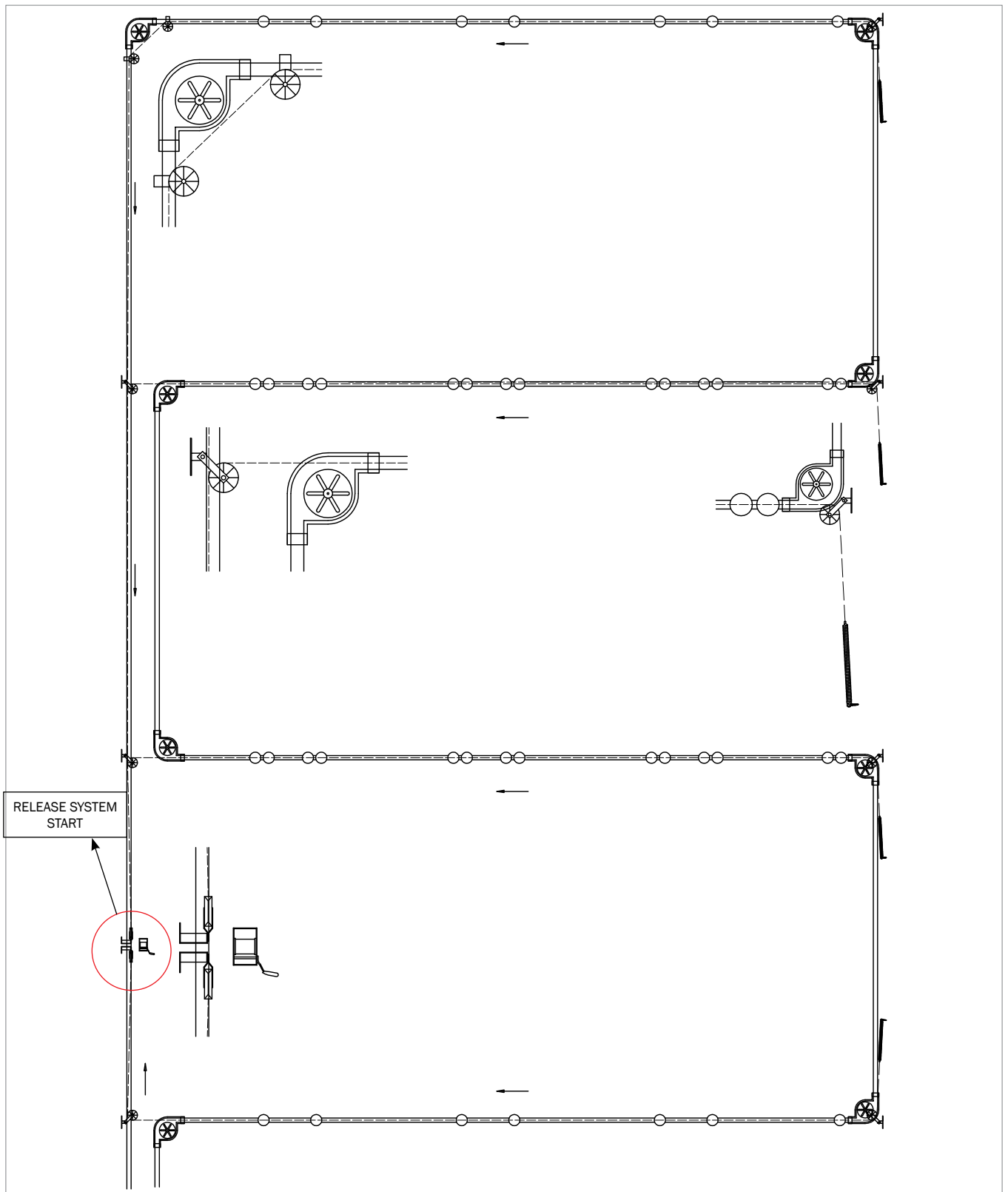
## Example 2



Example 3



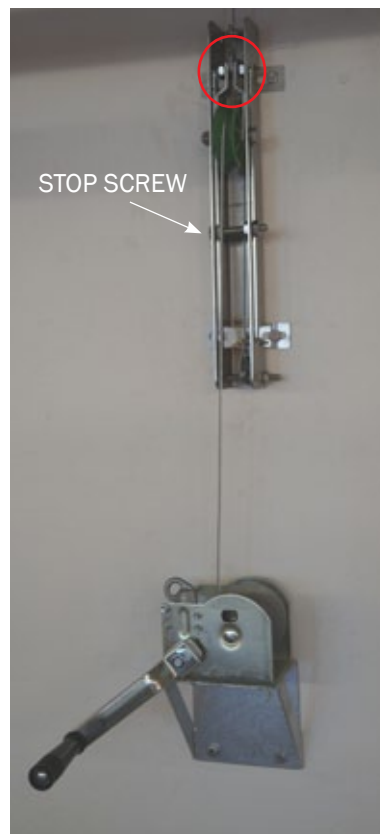
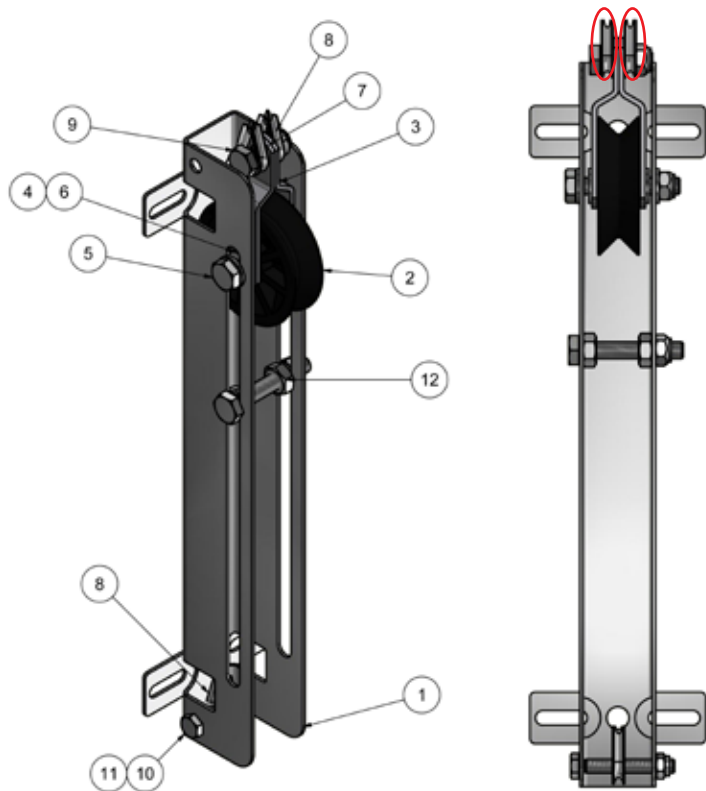
## Example 3



**Mounting on wall:**

For mounting of 2 wires on 1 release system, it is necessary to mount 2 pcs. thimble (nr. 8), as shown on the drawing:

For having 1 wire on 1 release system, mount it in the middle on the forkpart for wirewheel (nr. 3), as shown on the photo:



**PARTS LIST**

No.	Qty	Article nr.	Description
1	1	0221-971	Guiding rail for release system
2	1	0155-104	Wirewheel Ø60/Ø80
3	2	0156-104	Forkpart for Wirewheel
4	1	0156-105	Bushing for Wirewheel
5	2	30310060	Set screw A2 M10 X 60 DIN 933
6	4	35600038	Flat washer A2 Ø10 DIN 125A
7	3	33910017	Låsømøtrik FZB M10 DIN 985-6
8	3	39402500	Thimble 4mm
9	1	30310030	Set screw A2 M10 X 30 DIN 933
10	1	30308055	Set screw A2 M8 X 55 DIN 933
11	1	33908001	Lock nut A2 M8 DIN 985
12	2	33510017	Nut M10 A2 DIN934

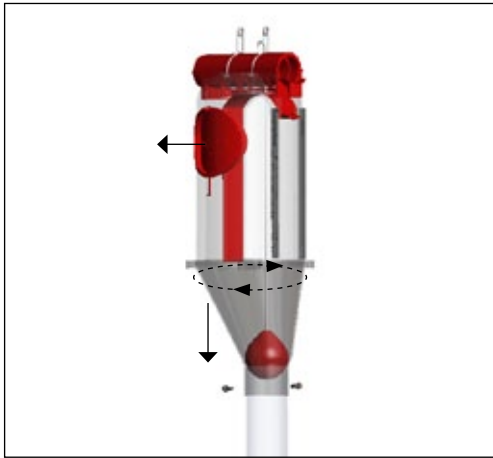
Release length is determined by the location of the stop screw.

Recommend length is between 18 and 27 cm.

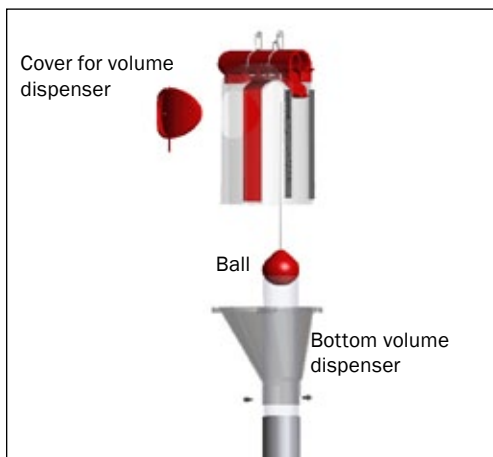
**Mounting on feeding pipe:**



## VD5 DRYING AFTER WASH



It is important to dry out VD5 properly after washing, to prevent caking.



Open volume dispenser and leave the ball hanging so the water can run out.

For the faster drying, take out cover for volume dispenser and open the bottom of the volume dispenser.\*

\* The bottom of the volume dispenser (hopper) can only be opened if it is mounted on the transparent tube Ø 80 cm.