

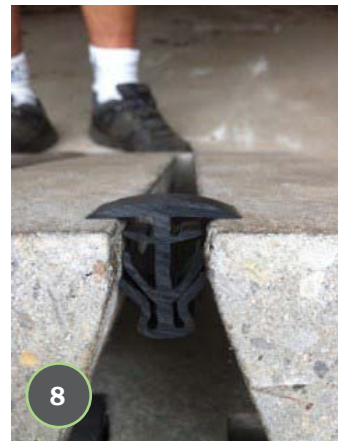
M-8610-GB

MOUNTING INSTRUCTIONS

SLAT GAP COVER



Insertion guidelines for Slat Gap Cover



Picture 1: Place the Slat Gap Cover in gap opening at approx 20 degree angle with your hand

Picture 2: Press down at one end, until locking system is in place

Picture 3: Use a hard rubber hammer and gently press into place.

Picture 4: **WRONG INSTALLATION:** Note the Slat Gap cover pointing too far up. (wrong angel) Slat Gap Cover`s surface will crack and there is a risk, the pig can pull the cover up
Cutting the cover : We recommend to short the cover 15-20mm of length
Example : 65 mm long cover is reduced to 50 mm long

Picture 5: **CORRECT INSTALLATION:** Note Slat Gap Cover, and degrees (Picture 6)

Picture 7: **Important:** The covers surface must still be curved after fitting (image 7 to right side)

Picture 8: Here you can see, how the locking system has its effect.

General info: Slat Gab Cover must be inserted without excess pressure.

Do not use a regular hammer.

Before inserting the covers we recommend that the covers have been stored at temperatures 20 * overnight

If necessary the covers can be warmed up but temperatures must not exceed 50 *