



BABY CARE

AUTOMATIC MILK FEEDING SYSTEM



- Automatical distribution of milk to the farrowing pens
- 1-2 more piglets per sow in the litter
- Up to 1 kg higher weight at weaning
- Less need for extra nursing sows
- Less need to move the piglets
- Lower infection risk
- Automatic cleaning program

BABY CARE

Automatic milk feeding system for distribution of fresh milk to the piglets



BABY CARE MILK FEEDING SYSTEM

Ensures that all piglets have enough milk. When the piglets have constant access to milk, it results in a higher weight at weaning.

When the piglets are 1 kilo heavier at weaning, they have a faster growth after weaning and this gives a higher survival rate.

- 1-2 more piglets per sow in the litter
- Up to 1 kg per pig at weaning
- Higher survival rate
- Less medicine consumption
- Good hygiene
- Fewer nursing sows



“ With the Baby Care milk feeding system, we get more weaned piglets per sow. They are in average 1 kg heavier, because they always have access to fresh milk.

Furthermore, we have reduced our medicine consumption by 30%. The pigs are in general very active and healthy.

The system is 99% automatic.”

Nicolai Greffel
Isgård Gods Pig Production ApS, Denmark
900 sows

WHAT IS BABY CARE

Ready to use unit - just connect water and milk powder silo

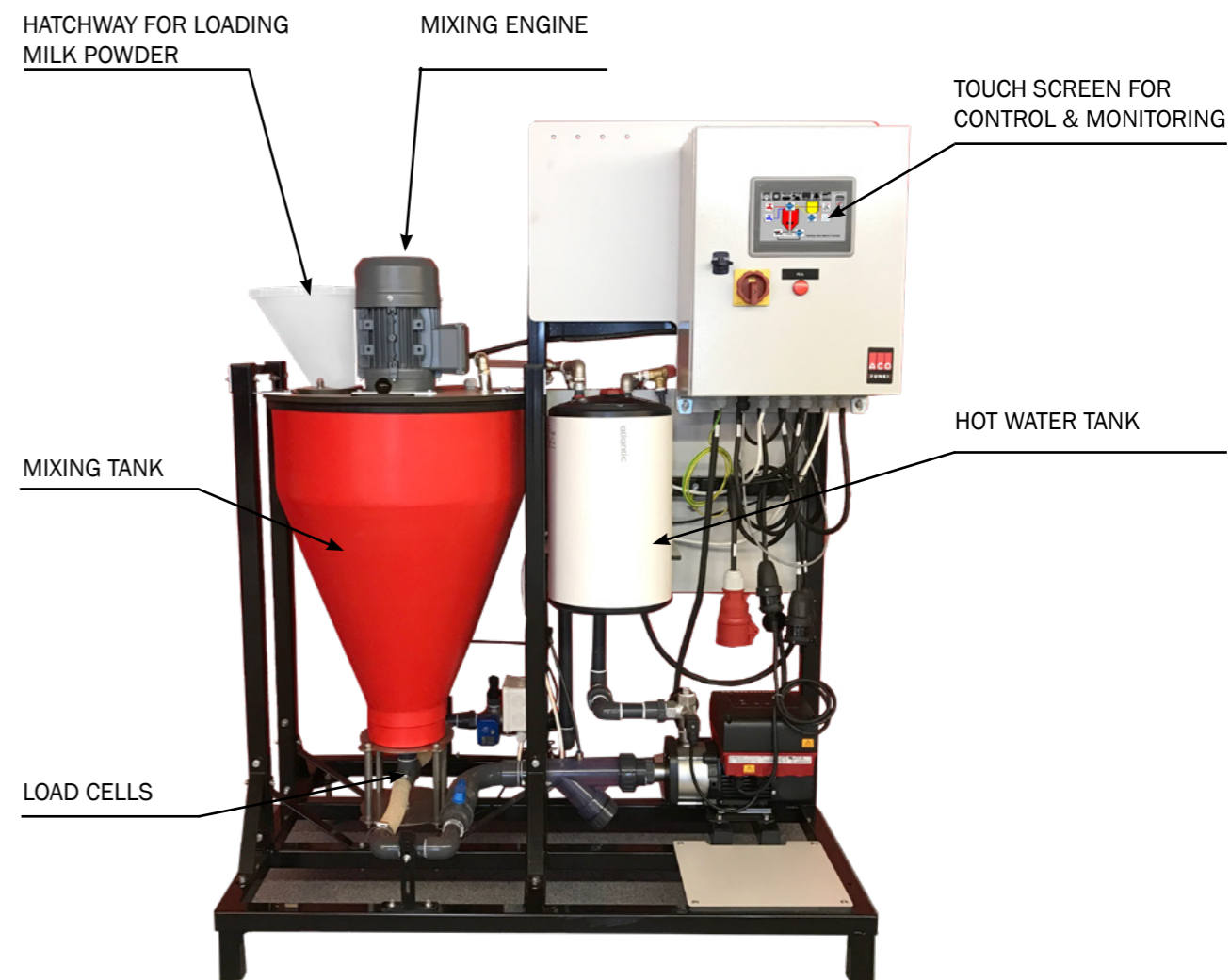
BABY CARE is an automatic milk feeding system that distributes fresh milk in a farrowing unit all day.

The system mixes the milk powder with hot water, and then adds cold water to get the right temperature.

The system has an automatic milk demand control and can be set to mix small portions of milk.

FACTS ABOUT BABY CARE:

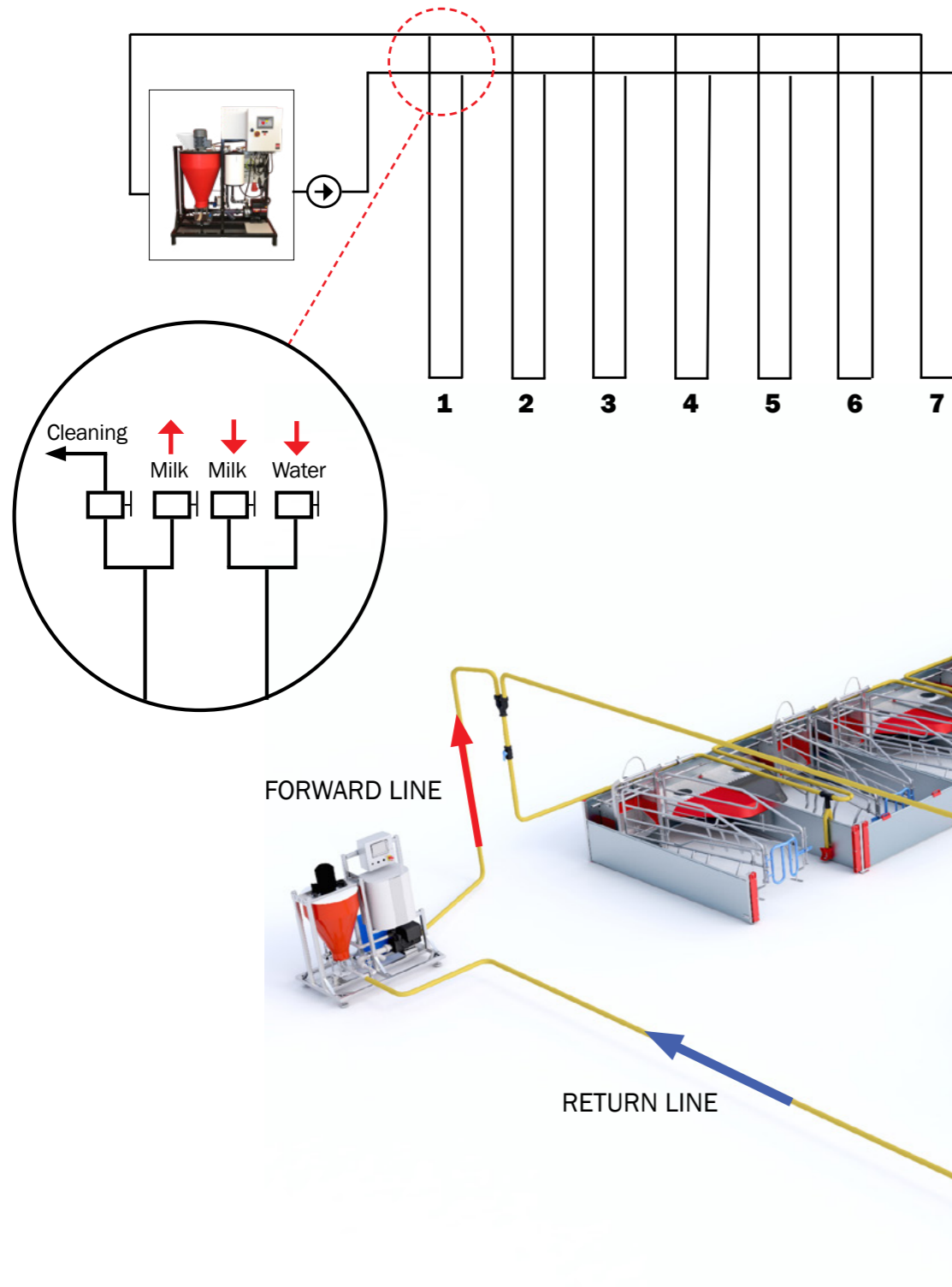
| | |
|---------------------------|---|
| Capacity | 700 farrowing pens |
| Drinking cups | Max 50 per circuit |
| Milk temperature | Approx. 20°C |
| Milk powder consumption | 130 g/1 liter water |
| Adjustment of the recipes | Touch screen with the user-friendly interface |



OPERATION PRINCIPLE

Simple piping

In the corridor between farrowing departments, there is one forward line and one return line. There are manual valves to select either Water or Milk for the piglets. Besides, there are valves for circuit cleaning.

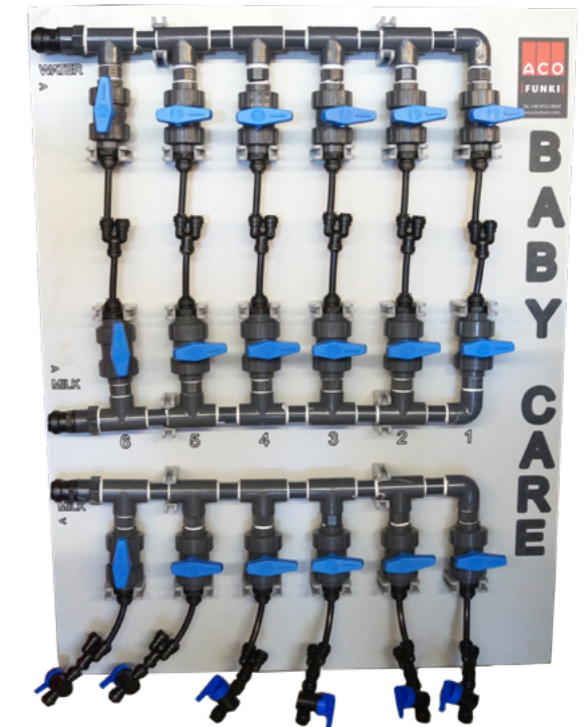
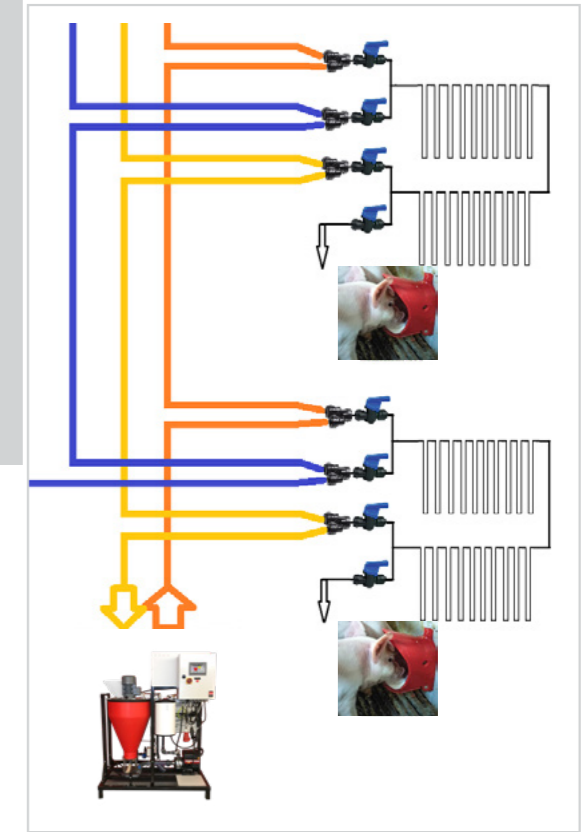


OPERATION PRINCIPLE

6 circuits

SIMPLE OPERATION

- Accumulation of consumption of both water, milk and soap products.
- Adjustment of reeepy depending on the piglets' needs.
- Alarm output, for silo empty, and less consumption than yesterday.

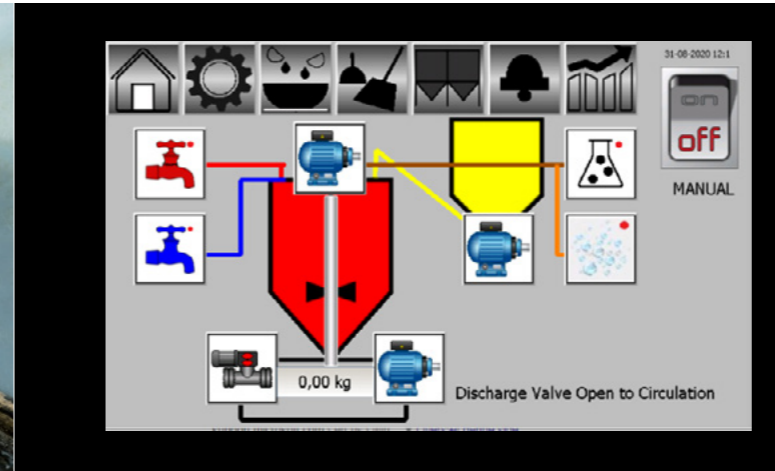
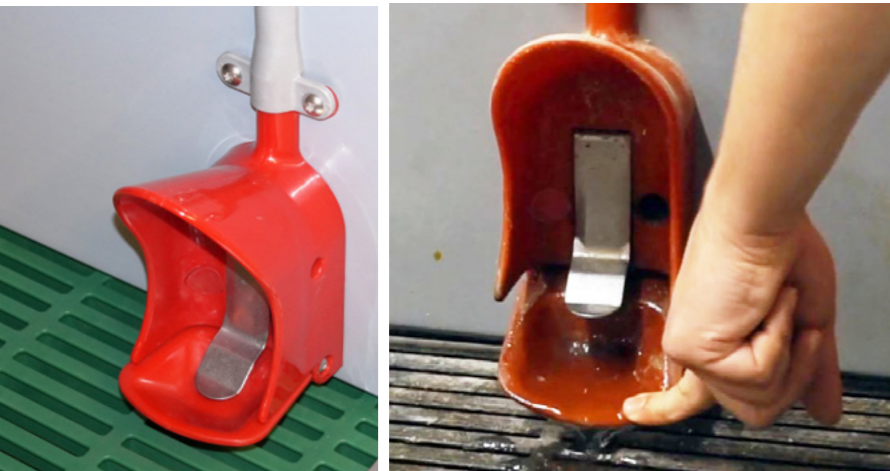


DRINKING CUPS

Can be used for both milk and water

TOUCH SCREEN

Simple control and operation



TOUCH COLOR DISPLAY

It is always possible to find the consumption of milk powder, water, soap and acid via the corresponding touch screen.

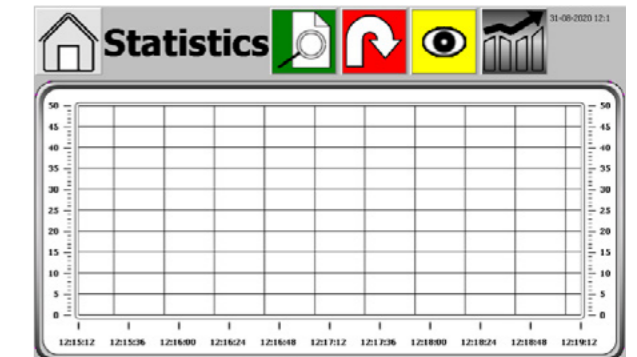
Touch color display enabling all operations with your finger tip.

VIP-O-MAT DRINKING CUPS

Drinking cups can be used for both milk and water.

The cups are very easy to clean, which is why they are recommended to use for the milk system.

- Solid and hygienic combination in strong and easy to clean plastic and stainless steel
- The bottom plate can be tilted for emptying and cleaning
- Easy assembly

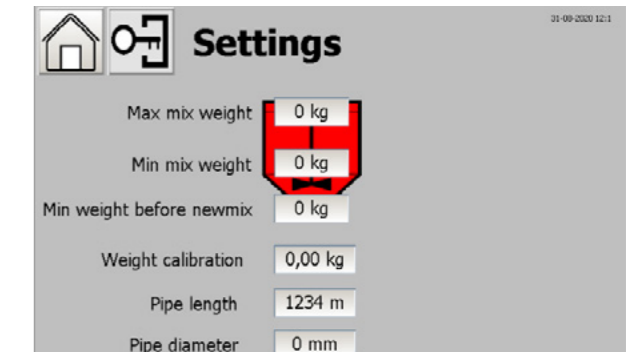
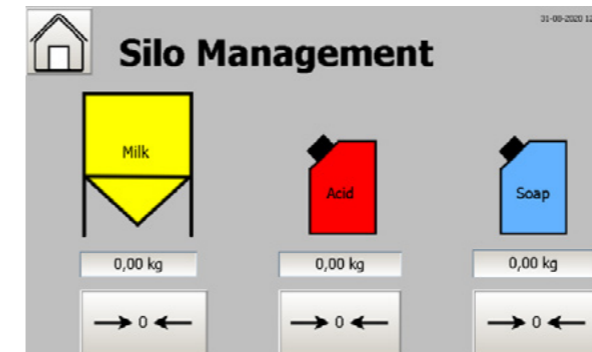
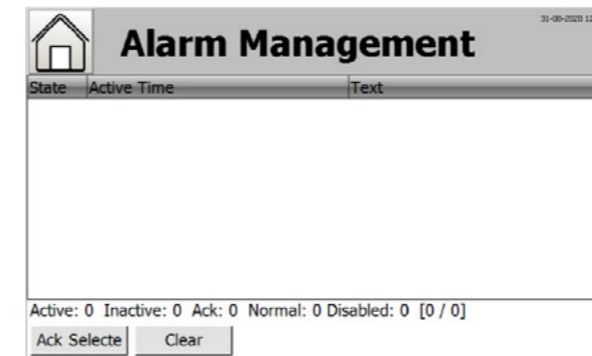


BABY CARE HELPS REDUCING THE NUMBER OF NURSING SOWS

When the amount of piglets per litter is increased, it is important to ensure that all the piglets get access to enough milk in order to reduce the mortality.

Baby Care supplies extra milk, so the piglets can drink both the sow's milk and the milk powder.

It means you avoid having extra nursing sows, and thus reduce the amount of farrowing pens, your production costs and save man-hours.



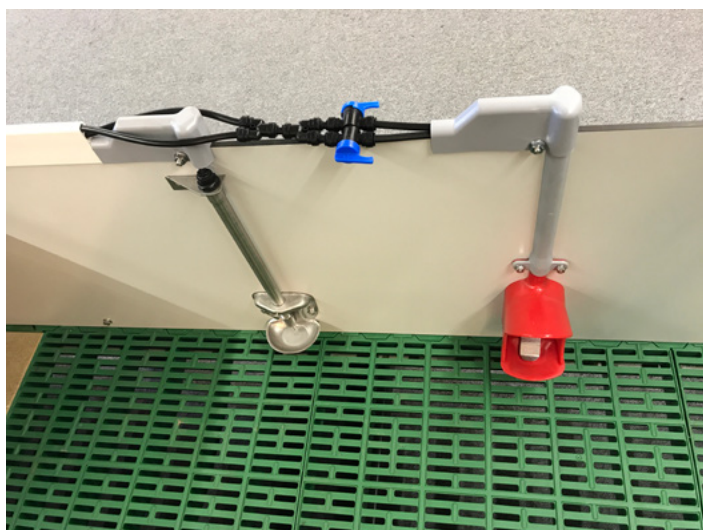
REGULATE MILK CONSUMPTION

Individual control of milk supply per pen

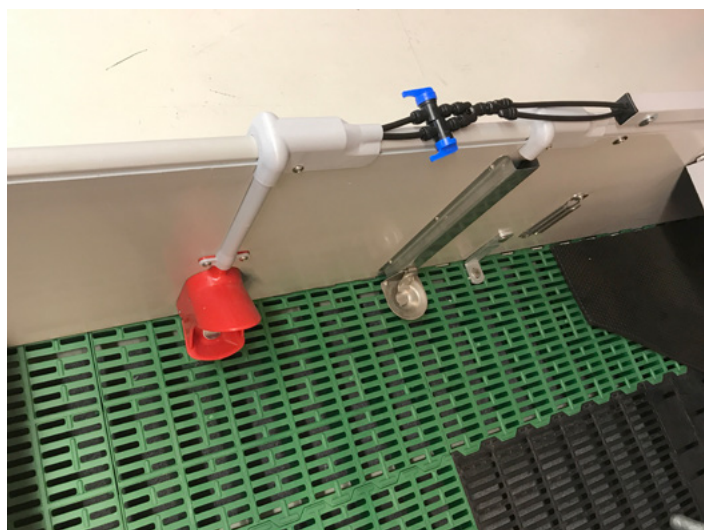
TURN ON/OFF VALVE

When you think that your piglets are big enough, you can turn off for milk, and the piglets will only get clean water.

It means you can regulate the milk consumption in each pen individually.



TURN ON/OFF VALVE
on a fiber partition



TURN ON/OFF VALVE
on a 35 mm PVC partition

Subject to changes in materials and design is reserved.

B-8031-GB

MASTER TRADING

MASTER TRADING • KIRKEVÆNGET 5 • 7400 HERNING • DENMARK

www.mastertrading.dk • Tel. +45 9744 6677